



**Fiscal Year Ended March 31, 2026**  
**Financial Results Briefing Materials**

**RENAISSANCE, INCORPORATED**

May 8, 2026

(TSE Prime: 2378)

Note: This document has been translated from the Japanese original for reference purposes only. In the event of any discrepancy between this translated document and the Japanese original, the original shall prevail.

## ■ **Business Status: The number of registered members increased in the sports club business, and M&A was conducted in the nursing care rehabilitation business.**

The number of registered members in the sports club business increased 1.7% year-on-year to 442,085 at the end of the fiscal year.

Price revisions in October resulted in an increase in member prices.

In the nursing care and medical peripheral business, Kaede no Kaze became a subsidiary and expanded the number of nursing care rehabilitation facilities to 87. Contributed to increased revenue.

## ■ **Restructuring: Closure of unprofitable facilities and impairment of fixed assets**

In light of changes in the business environment, we decided to close a total of 6 sports clubs, mainly those located in central Tokyo.

We also recorded impairment losses for 38 facilities and measures for facilities with no prospect of investment recovery among those showing signs of impairment as of the end of the current consolidated fiscal year.

## ■ **2026-2030 Medium-Term Management Plan: Establishing a roadmap from turnaround to renewed growth**

Revised the 2024-2027 Medium-Term Management Plan and formulated the 2026-2030 Medium-Term Management Plan.

The first half (FY 2026 to FY 2027) will be spent recovering and strengthening our financial position. The second half (FY 2028 to FY 2030) will be spent reforming our business portfolio.

1 . Summary of Financial Results for the Fiscal Year Ended March31,2026	... 3
2 . Outlook for the Fiscal Year Ending March31,2027	... 17
3 . Establishment of the 2026-2030 Medium-Term Management Plan	... 20

# Summary of Financial Results for the Fiscal Year Ended March 31, 2026

# Closing of unprofitable facilities and impairment of fixed assets

Due to changes in the business environment, we carefully estimated the closing of unprofitable facilities and the recoverability of fixed assets and recorded impairment losses.

## Background and issues

- The business environment in the sports club business has changed significantly, including increases in personnel costs and other costs.
- Profitability has deteriorated mainly in stores located in central Tokyo where the ratio of rent to net sales is large.



## Details of accounting treatment

Decisions to close stores and  
Costs for closing stores that are expected to occur in  
the future are recorded as a lump sum

### Closing stores: A total of 6 stores

- Losses arising from store closures: Approx. 1.6 billion yen
- Impairment losses arising from changes in the estimation of asset retirement obligations: Approx. 800 million yen

Impairment of fixed assets

### Target facilities: 38 facilities in total (Including facilities that have been closed)

- Impairment losses arising from facilities with declining profitability: Approx. 1.1 billion yen



**Completion of measures for facilities with signs of impairment as of the end of the current consolidated fiscal year that are not expected to recover investment**

## Consolidated Statement of Income

### <YoY Comparison>

- Sales increased due to an increase in the number of registered members and an increase in the unit price of members in the sports club business, as well as the conversion of Kaede into a wind farm company.
- Personnel expenses increased due to an increase in salary levels, and equipment expenses such as depreciation and amortization increased due to the merger with Oasis.

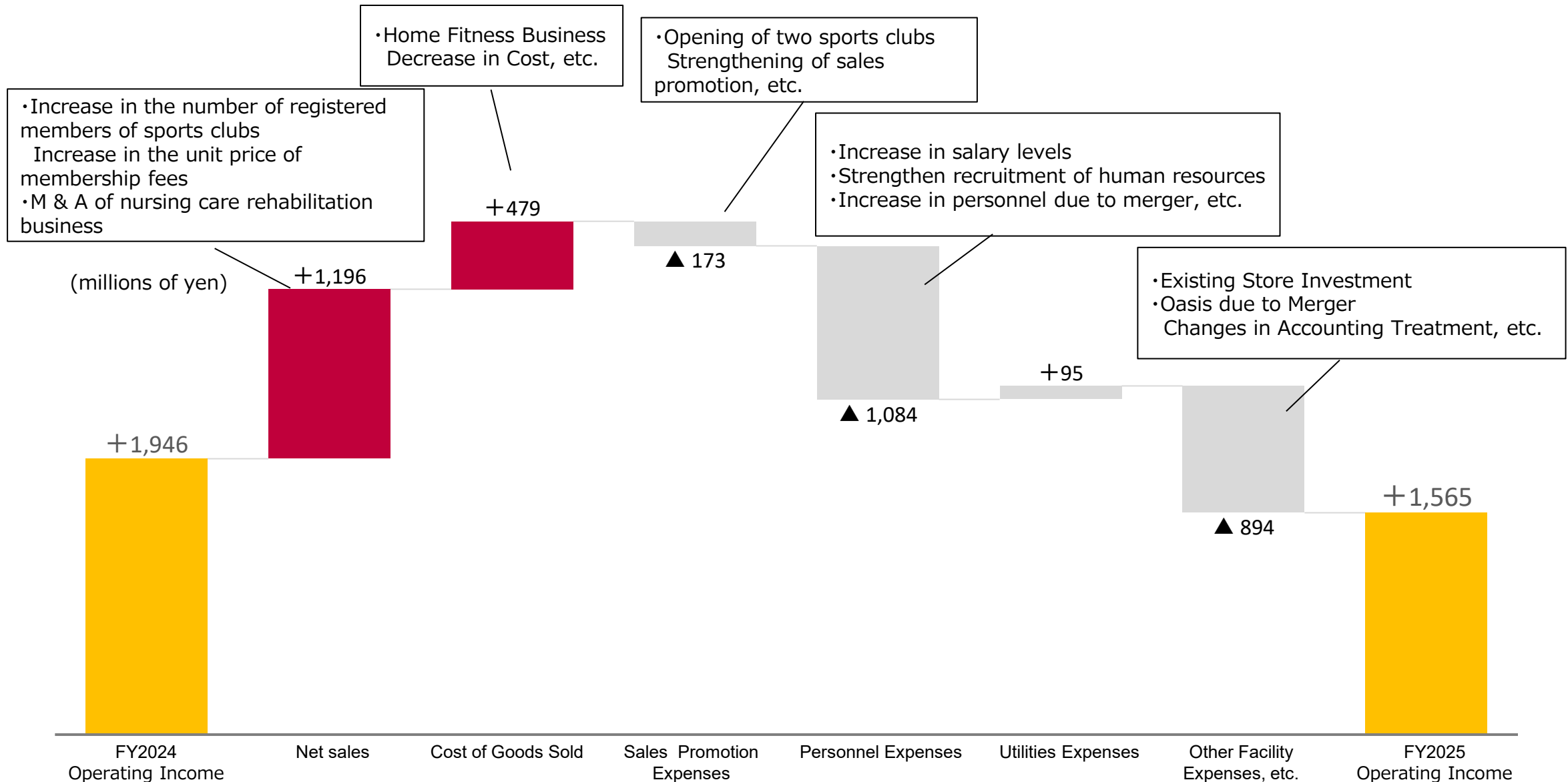
### <Difference from Earnings Forecast>

- Underachievement of earnings forecast mainly due to sluggish growth in the home fitness business and the recording of an extraordinary loss.

(millions of yen)

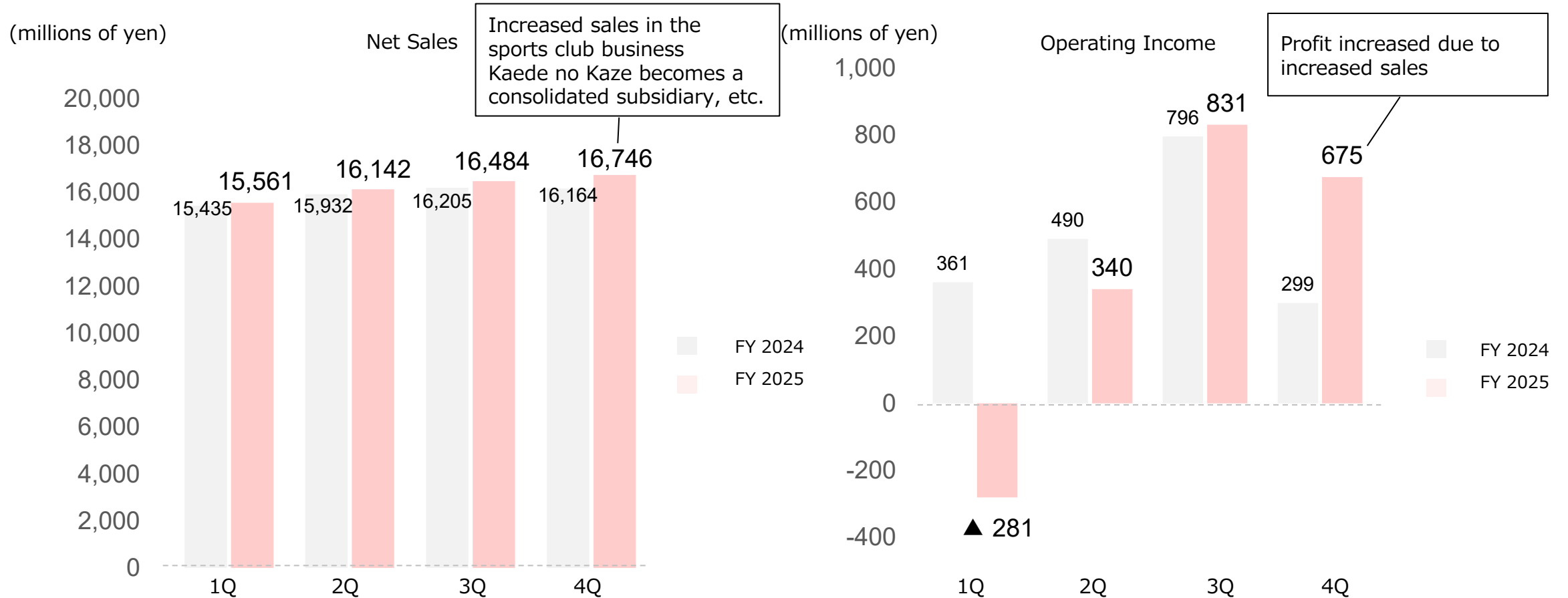
Consolidated	Fiscal year ended March 2025	Fiscal year ended March 2026	Year-on-Year	Revised earnings forecast	Compared with the revised earnings forecast
Sales	63,737	64,933	+1.9%	66,000	▲1.6%
Operating Income	1,946	1,565	▲19.6%	1,700	▲7.9%
Ordinary Income	1,224	795	▲35.1%	900	▲11.7%
Net income attributable to owners of parent	766	▲ 2,106	-	500	-

# Factors for Changes in Consolidated Operating Income (YoY Difference)



# Consolidated Quarterly Results

Sales increased due to an increase in the number of members and an increase in the unit price of members in the sports club business and the acquisition of Kaede no Kaze in December. Operating income recovered in the second half of the fiscal year.



Changes in the number of members in the sports club business over the year, business promotion expenses, facilities, etc.  
Profit tends to be lowest in 1Q and highest in 3Q when the number of members peaks.

# Consolidated Balance Sheets

(millions of yen)

		End of March 2025	End of March 2026	Year-on-Year	Major factors of change
	Current assets	12,591	14,112	+12.1%	Increase in cash and deposits
	Non-current assets	42,835	42,928	+0.2%	
	Deferred assets	9	2	▲77.0%	
<b>Total assets</b>		<b>55,435</b>	<b>57,043</b>	<b>+2.9%</b>	
	Current liabilities	15,586	17,360	+11.4%	Increase in short-term borrowings
	Non-current liabilities	27,731	29,993	+8.2%	Increase in long-term debt and asset retirement obligations
<b>Total liabilities</b>		<b>43,317</b>	<b>47,354</b>	<b>+9.3%</b>	
<b>Total net assets</b>		<b>12,118</b>	<b>9,689</b>	<b>▲20.0%</b>	
<b>Total liabilities and net assets</b>		<b>55,435</b>	<b>57,043</b>	<b>+2.9%</b>	

# Consolidated Statements of Cash Flows

(millions of yen)

	Year ended March 2025	Year ended March 2026	Main features for the year ended March 31, 2026
Cash flows from operating activities	3,510	4,122	Increase in depreciation and long-term guarantee deposits, etc.
Cash flows from investing activities	▲ 3,158	▲ 4,399	Purchase of property, plant and equipment and shares of consolidated subsidiaries Net cash used
Net cash provided by (used in) financing activities	1,086	1,190	Increase due to short-term and long-term borrowings Repayment of long-term borrowings and lease obligations
Translation differences on cash and cash equivalents	30	▲ 22	
Increase (decrease) in cash and cash equivalents	1,468	890	
Cash and cash equivalents at beginning of year	6,211	7,680	
Cash and cash equivalents at end of year	7,680	8,570	

# Consolidated Sales by Business Segment



(millions of yen)

	Fiscal year ended March 2025	Composition ratio	Fiscal year ended March 2026	Composition ratio	Year-on-Year
Fitness Division Total	28,603	44.9%	29,200	45.0%	+2.1%
Swimming School	13,093	20.5%	13,683	21.1%	+4.5%
Tennis Schools	4,227	6.6%	4,499	6.9%	+6.4%
Other Schools	1,787	2.8%	1,781	2.7%	▲0.4%
School sector total	19,108	30.0%	19,963	30.7%	+4.5%
Total for shops	789	1.2%	819	1.3%	+3.8%
Total other income (rental lockers, etc.)	5,129	8.1%	5,161	8.0%	+0.6%
Total Sales of Sports Facilities	53,631	84.1%	55,145	84.9%	+2.8%
Health Promotion in Communities and Corporations	3,246	5.1%	3,382	5.2%	+4.2%
nursing rehabilitation	2,021	3.2%	2,467	3.8%	+22.1%
Home Fitness	4,837	7.6%	3,938	6.1%	▲18.6%
<b>Total Sales</b>	<b>63,737</b>	<b>100.0%</b>	<b>64,933</b>	<b>100.0%</b>	<b>+1.9%</b>

\*From the current fiscal year, due to the merger of Sports Oasis Inc. and organizational changes, the reporting categories and the businesses included in each category have been partially changed.

has been partially changed. The previous interim consolidated accounting period has also been reclassified based on the changes.

## Merged with Sports Oasis in April



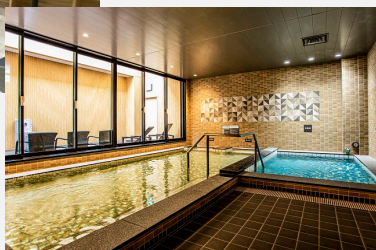
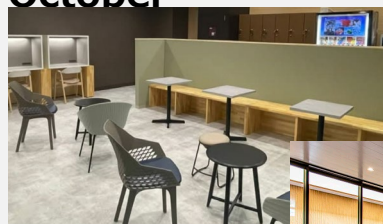
Utilizing Sports Oasis' store network  
Increasing membership for corporations and health insurance societies  
Efforts to create synergies tackle.

## 2 new stores opened, taking over facilities of other companies



Renaissance Higashi Sapporo 24 (April) Renaissance Viera Akemai 24 (July)

## Price revisions implemented in October



In addition to enhancing facilities through capital investment in existing clubs, membership fees were revised in light of recent price increases. Contributing to an increase in member unit prices.

## operated by Tokyu Sports System in July 2026 Decided to acquire 8 facilities



Acquired 5 Atriodue Next facilities, 2 Atriolite facilities, and 1 swimming school \* to strengthen the store base in the Tokyo metropolitan area, including areas along the Tokyu Railway.

\*After the acquisition, the swimming school will be operated as 1 Atriodue Next Railway Plaza facility.

## Number of members by sports club business sector

The number of registered members for all membership categories increased from the same period of the previous fiscal year.

(Unit: members)

	As of March 31, 2025	Composition ratio	As of March 31, 2026	Composition ratio	Year-on-Year
Fitness Total	248,727	57.2%	253,249	57.3%	+1.8%
swimming school	127,225	29.3%	129,292	29.3%	+1.6%
Tennis Schools	34,589	8.0%	35,115	7.9%	+1.5%
Other Schools	24,350	5.6%	24,429	5.5%	+0.3%
Total Schools	186,164	42.8%	188,836	42.7%	+1.4%
<b>Total Membership</b>	<b>434,891</b>	<b>100.0%</b>	<b>442,085</b>	<b>100.0%</b>	<b>+1.7%</b>

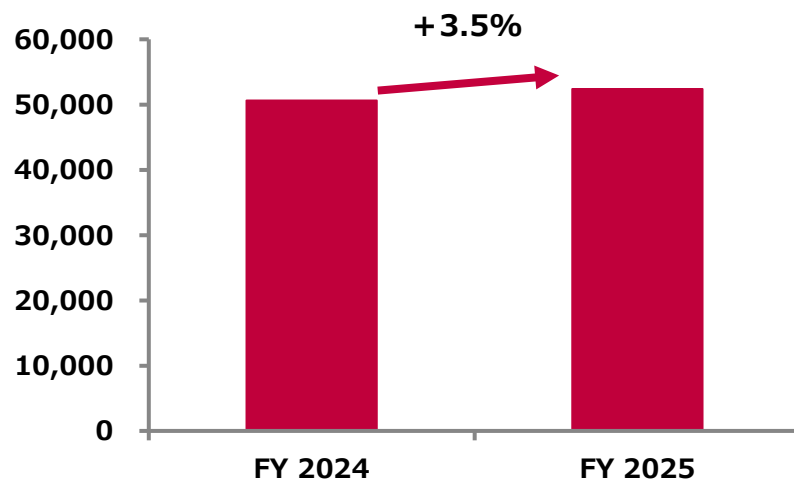
\*From the consolidated fiscal year under review, the figures above do not include online members, but include the number of Renaissance Vietnam sports club members.

# Sports Club Business Existing Club Trends

\*Total of existing Renaissance stores and former Oasis stores

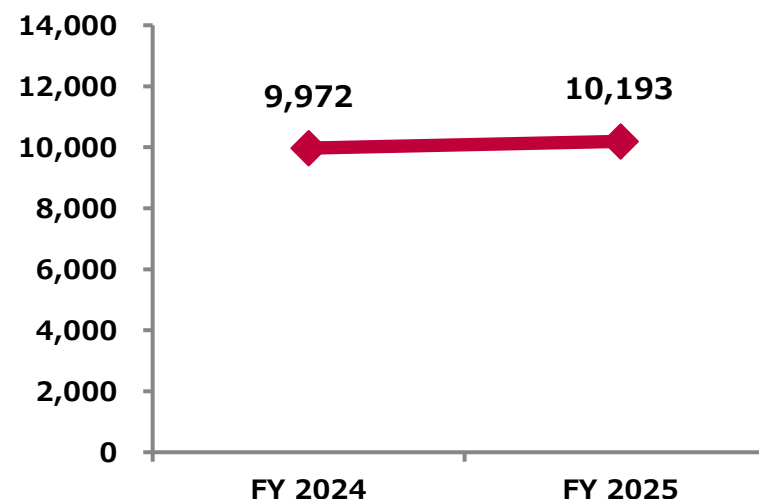
## ■ Net Sales

(millions of yen)



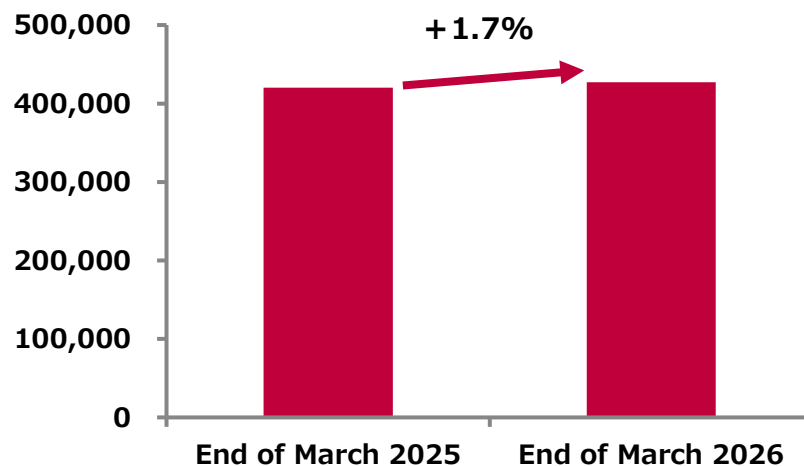
## ■ Unit price for members (year-to-date)

(Yen)



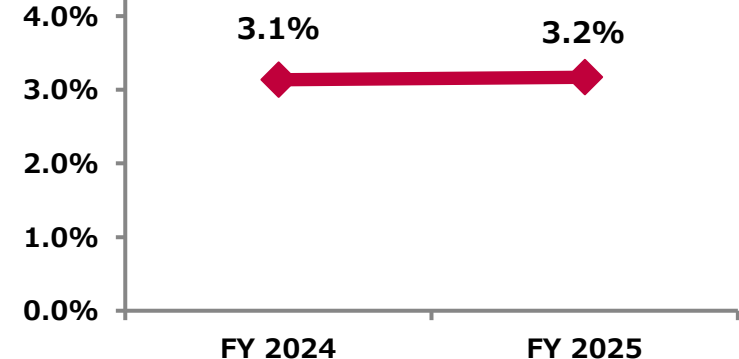
## ■ Number of members as of March 31

(Unit: members)



## ■ Withdrawal rate (year-to-date)

(%)



## Nursing Care and Medical Services

Through expansion of the number of facilities and M & A  
Significantly strengthen the business foundation  
for the next fiscal year



Existing businesses remain stable.  
Genki Gym, a day care service specializing  
in rehabilitation  
**6 new facilities opened**  
(4 directly managed and 2 FC)

### M & A and business acquisition

- Effective December Kaede no Kaze Co., Ltd. becomes a 100% subsidiary.

**36 day care facilities (13 directly managed and 23 FC) increased.**

- Effective April 2026 Leven Community Co., Ltd. **5 facilities** specializing in rehabilitation "Myreha" will be acquired from Leven Community Co., Ltd.



• Support for long-term care rehabilitation will be extended to users with a relatively high level of care.  
-> We will respond in anticipation of revisions to the long-term care remuneration system.  
• We expanded Genki Gym while reducing initial costs.

## Home Fitness Business

Sales of existing products declined from the previous year  
Development and sales of new products gained popularity



### E-Commerce Sales

Our mainstay Stepper series achieved expected sales of End in the previous fiscal year and struggled due to a backlash.



### TV mail-order

Developed in collaboration with the nursing care rehabilitation business  
A new product that supports both facial sagging care and swallowing power  
"Styly Face" receives favorable reviews.

Efforts to strengthen sales structure for future business expansion

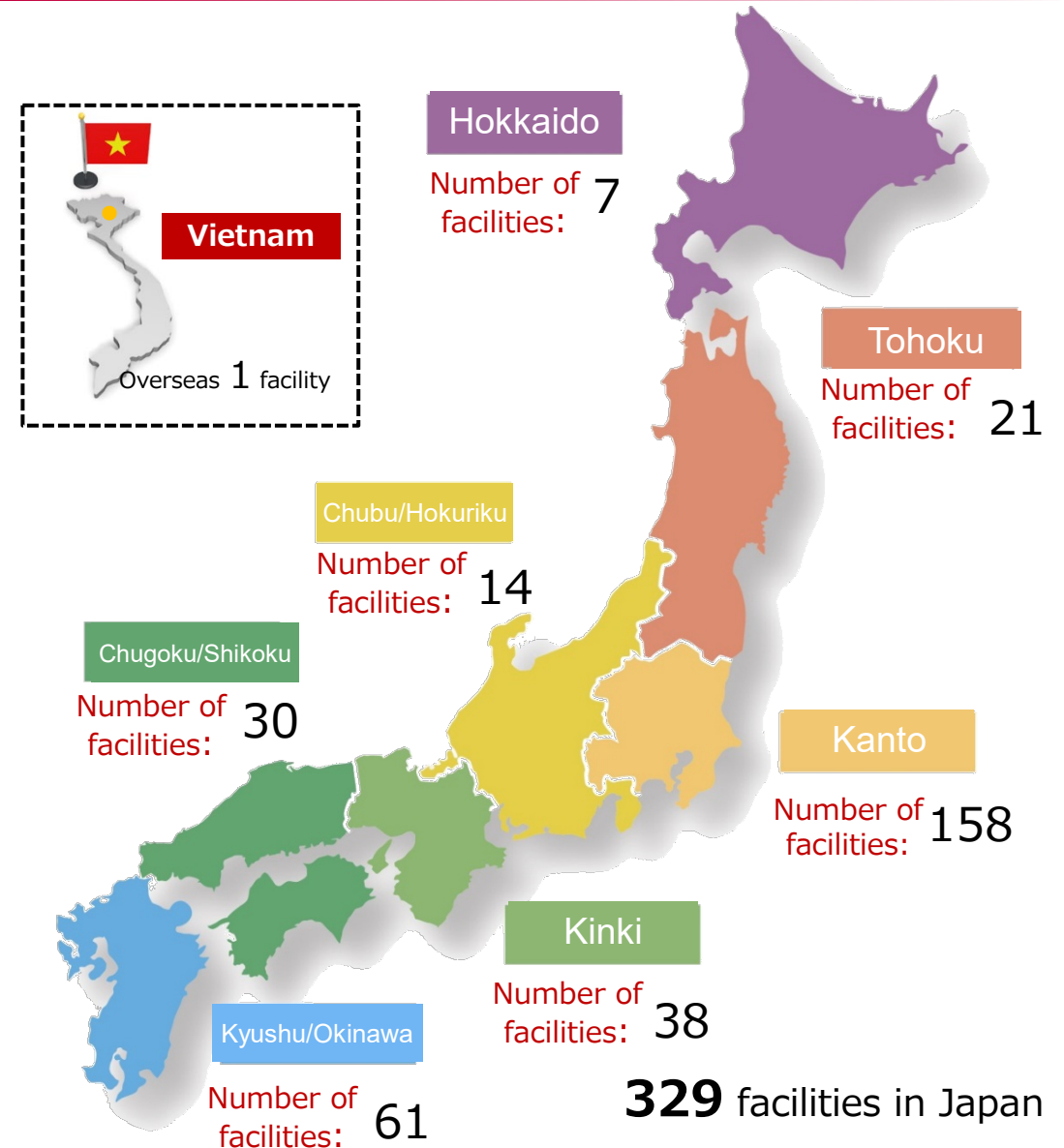
# Number of stores opened and closed in FY March 2026

Date of opening/opening	Facility name	Address	Type
2025 April	Sports Club & Sauna Spa Renaissance Higashi Sapporo 24	Sapporo, Hokkaido	Sports Club
2025 April	Higashiyamato City Sports Facilities (6 facilities in total)	Higashiyamato City, Tokyo	Designated and managed
2025 April	Kitakyushu City Asao Sports Center	Kitakyushu City, Fukuoka Prefecture	Designated management
2025 April	Nago B & G Marine Center Pool	Nago, Okinawa	Designated and managed
2025 May	Renaissance Genki Gym Higashikurume	Higashikurume, Tokyo	Nursing care rehabilitation (directly managed)
2025 June	Renaissance Genki Gym Mejikudai	Bunkyo-ku, Tokyo	Nursing care rehabilitation (directly managed)
2025 June	Renaissance Genki Gym Hiroshima Ujina	Hiroshima, Hiroshima	Nursing Care Rehabilitation (Franchise)
2025 July	Fuchu B & G Marine Center	Fuchu, Hiroshima	Designated management
2025 July	Sports Club & Sauna Spa Renaissance Viera Meimai 24	Kobe, Hyogo	Sports Club
2025 August	Renaissance Genki Gym Kawasaki Hatchonawate	Kawasaki, Kanagawa	Nursing care rehabilitation (directly managed)
2025 September	Renaissance Genki Gym Iwaki Onahama	Iwaki City, Fukushima Prefecture	Nursing Care Rehabilitation (Franchise)
2025 November	Renaissance Genki Gym Aobadai	Yokohama, Kanagawa	Long-term care rehabilitation (directly managed)
Closing date	Facility name	Location	Type
2025 May	BEACHTOWN HIBIYA PARK	Chiyoda-ku, Tokyo	Outdoor fitness (directly managed)
2025 June	Re PT GYM RENAISSANCE JAPAN Times City	Hanoi, Vietnam	Personal training gym
2025 December	Renaissance Genki Gym Jr. Mitsukakyo	Yokohama, Kanagawa	Nursing care rehabilitation (directly managed)
2025 December	Fitness & Yoga Renaissance Aeon Mall Binns on Canary	Ho Chi Minh City, Vietnam	Sports Club
2026 February	Sports Club & Sauna Spa Renaissance Tennocho	Yokohama, Kanagawa	Sports Club
2026 March	OASIS RAHEEL Ebisu 24Plus	Shibuya-ku, Tokyo	Sports Club
2026 March	Outdoor Fitness Sennan Long Park	Sennan, Osaka	Outdoor Fitness (Contract)

# Number of facilities (as of the end of March 2026)

Group total **330** facilities

			End of March 2026
Japan	Renaissance	Sports club facilities	141
		Contract facilities	86
		Operation support	4
		<b>Sports clubs Total</b>	<b>231</b>
		<b>Small-sized facilities Total</b>	<b>2</b>
		Rehabilitation facilities for long-term care (directly managed)	39
	Rehabilitation facilities for long-term care (FC)	12	
	<b>Total Rehabilitation facilities for long-term care</b>	<b>51</b>	
	Kaede no Kaze	Long-term care rehabilitation facilities (directly managed)	13
		Long-term care rehabilitation facilities (FC)	23
		<b>Long-term care rehabilitation facilities Total</b>	<b>36</b>
	BEACH TOWN	Outdoor fitness facilities	3
		Contract Facilities	6
<b>Outdoor Fitness Facilities Total</b>		<b>9</b>	
		<b>Sub</b>	<b>329</b>
Overseas	Renaissance Vietnam	Sports club facilities	1
		<b>Sports clubs Total</b>	<b>1</b>
			<b>Subtotal</b>
<b>Total</b>			<b>330</b>



# Outlook for the Fiscal Year Ending March 31, 2027

# Consolidated earnings forecast and dividend forecast for the fiscal year ending March 31, 2027



Net sales are expected to increase 4.7% year on year due to factors such as an increase in the number of existing store members in the sports club business and an increase in the number of 7 facilities, including Atrio Doe Next, and full-year contributions from Kaede no Kaze and 5 facilities, My Rehab, in the long-term care rehabilitation business. Operating income is expected to increase 15.0% year on year as we strengthen our structure for future growth in the areas surrounding sports clubs and the home fitness business.

(millions of yen)

	Fiscal year ending March 2026 (Actual)	Fiscal year ending March 2027 (Forecast)	YoY	Change
Net Sales	64,933	68,000	+4.7%	+3,066
Operating income	1,565	1,800	+15.0%	+234
Ordinary income	795	900	+13.2%	+104
Profit attributable to owners of parent Net income	▲ 2,106	500	—	+2,606
Per share Net income (yen)	▲ 112.47	25.38	—	—
Per 1 share Dividends (yen)	13.0 (interim 4.0/year-end 9.0)	13.0 (interim 4.0/year-end 9.0)	—	—
Operating income margin	2.4%	2.6%	—	—

# Scheduled openings and closings after the fiscal year ending March 2027

\* Including facilities to be acquired

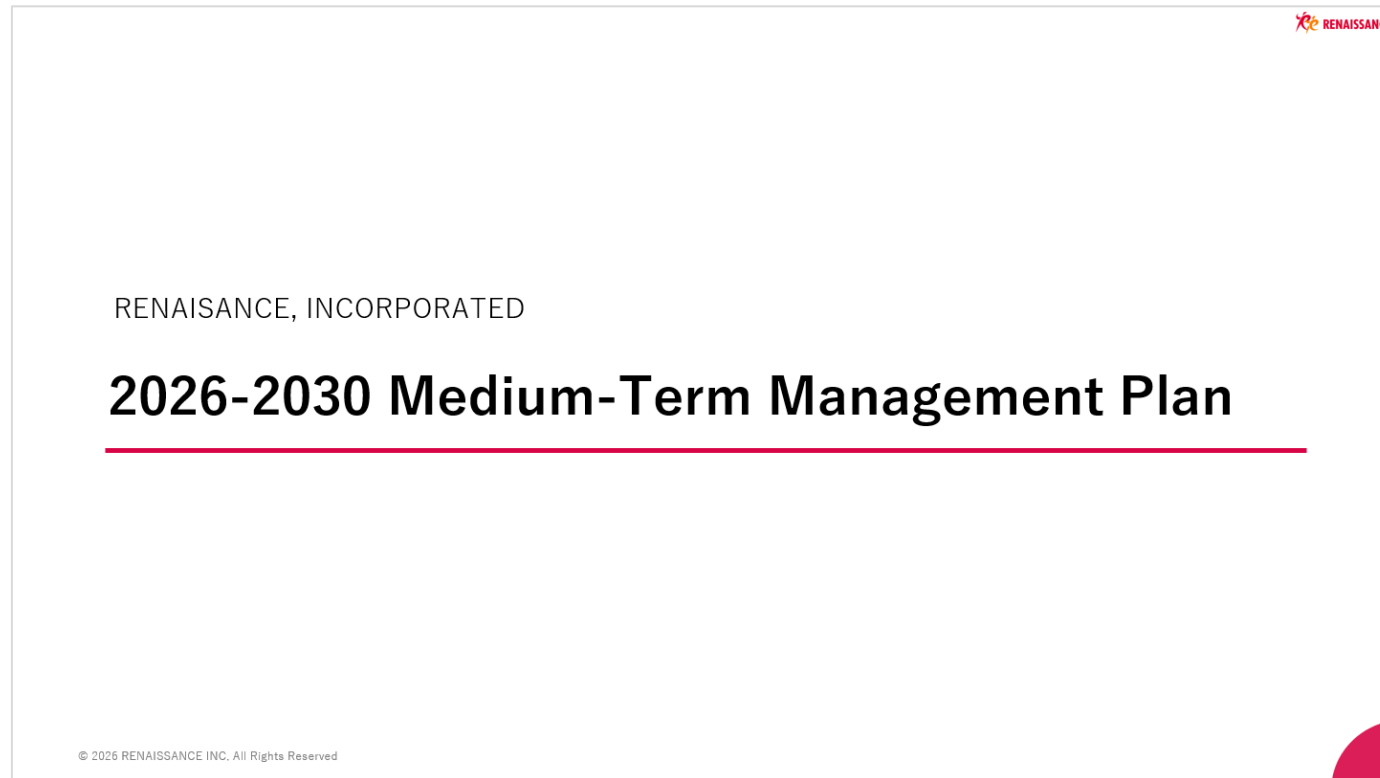


Opening and opening date	Facility name	Address	Type
2026 April	Renaissance Genki Gym Goko	Matsudo City, Chiba Prefecture	Nursing care rehabilitation (directly managed)
2026 April	Renaissance Genki Gym Misato	Misato, Saitama	Nursing Care Rehabilitation (Directly Operated)
2026 April	Renaissance Genki Gym Urawa	Saitama City, Saitama Prefecture	Nursing care rehabilitation (directly managed)
2026 April	Renaissance Genki Gym Yoshikawa	Yoshikawa, Saitama	Nursing Care Rehabilitation (Directly Operated)
2026 April	Renaissance Genki Gym Yanagijima	Soka, Saitama	Nursing care rehabilitation (directly managed)
2026 April	Mitoyo City General Gymnasium	Mitoyo City, Kagawa Prefecture	Designated
2026 April	Mitoyo City Midorigaoka Soccer Stadium	Kagawa Prefecture	Designated management
2026 April	Fukuoka City Higashi Citizen Pool	Fukuoka City, Fukuoka	Designated Management
2026 April	Fukuoka City Central Citizen's Pool	Fukuoka City, Fukuoka Prefecture	Designated Management
2026 April	Koga City Health and Culture Facility "Cross Pal Koga "	Koga City, Fukuoka Prefecture	Designated and managed
2026 July	Sports Club & Spa Renaissance Atriode Next Aobadai 24	Yokohama, Kanagawa	Sports Club
2026 July	Sports Club & Sauna Spa Renaissance Atriode Next Futakotamagawa	Setagaya-ku, Tokyo	Sports Club
2026 July	Sports Club & Sauna Spa Renaissance Atriode Next Inscription Valley	Meguroku, Tokyo	Sports Club
2026 July	Fitness Club & Sauna Spa Renaissance Atriode Next Musashi-Koyama 24	Shinagawa-ku, Tokyo	Sports Club
2026 July	Sports Club & Sauna Spa Renaissance Atriode Next Tama Plaza	Yokohama, Kanagawa	Sports Club
Closing date	Facility name	Address	Type
2026 May	greener	Ichikawa, Chiba Prefecture	Outdoor fitness (outsourced)
2026 June	Sports Club & Sauna Spa Renaissance Abeno 24	Osaka, Osaka	Sports Club
2026 June	Fitness Club & Sauna Renaissance Sumido 24	Daito-shi, Osaka	Sports Club

### 3. Establishment of the 2026-2030 Medium-Term Management Plan

# Establishment of the 2026-2030 Medium-Term Management Plan

Based on the progress of business performance to date, the Company revised the 2024-2027 Medium-Term Management Plan and newly established the 2026-2030 Medium-Term Management Plan. We have formulated it. For details, please refer to the "Notice Concerning Revision and Establishment of Medium-Term Management Plan" announced today.





Corporate Planning Department,  
RENAISSANCE, INCORPORATED

Address 2-10-14 Ryogoku, Sumida-ku, Tokyo

【MAIL】 [ml\\_ir-toiwase@s-renaissance.co.jp](mailto:ml_ir-toiwase@s-renaissance.co.jp)

【URL】 <https://www.s-renaissance.co.jp/>

This presentation material contains forward-looking statements based on assumptions, projections and plans as of May 8, 2026. Actual results may differ from these projections due to risks and uncertainties associated with the global economy, currency fluctuations and competitive conditions.